



ECONOMIC INDICATORS

NEW SOUTH WALES

EMBARGO: 11:30AM (CANBERRA TIME) TUES 17 APR 2001

C O N T E N T S

	<i>Page</i>
Notes	2
NSW overview	3
Main features	4
List of tables and graphs	5
Population	6
Labour	7
Production	10
Building	11
Retail trade	12
New motor vehicle registrations	13
Tourism	14
Consumer and producer price indexes	15
Finance	16
State Government finance	17
Investment	18
International trade	19

- For further information about these and related statistics, contact Jill Tomlinson on Sydney 02 9268 4123, or the National Information Service on 1300 135 070.

NOTES

FORTHCOMING ISSUES

<i>ISSUE</i>	<i>ISSUE DATE</i>
May 2001	15 May 2001
June 2001	15 June 2001
July 2001	16 July 2001
August 2001	15 August 2001
September 2001	17 September 2001
October 2001	15 October 2001

DATA NOTES

ABS statistical series are being impacted to varying degrees as a result of The New Tax System (TNTS), introduced in Australia from 1 July 2000. TNTS included the removal of Wholesale Sales Tax and the introduction of a Goods and Services Tax (GST), and as a result, a wide range of ABS data series will reflect significant immediate and subsequent impacts. For further information see *Australian Economic Indicators, July 2000* (Cat. no. 1350.0).

GENERAL

This publication provides information on a wide range of economic indicators which are the latest available at the time of publication. In a number of cases, figures appearing in this summary are preliminary and are subject to revision in subsequent issues.

SEASONAL ADJUSTMENT AND TREND ESTIMATION

Seasonal adjustment is a means of removing the estimated effects of normal seasonal variation from a series so that the effects of other variations on that series can be more clearly recognised. This means that movements of seasonally adjusted estimates may not be reliable indicators of trend behaviour. Smoothing seasonally adjusted series produces a measure of the underlying trend by reducing the impact of the irregular component of the series. For an explanation of seasonal adjustment derivation, refer to the publication *Seasonally Adjusted Indicators* (Cat. no. 1308.0).

SYMBOLS AND OTHER USAGES

kWh	kilowatt hour
n.a.	not available
n.p.	not available for publication but included in totals where applicable
n.y.a	not yet available
r	figure or series revised since previous issue
. .	not applicable
—	nil or rounded to zero
—	break in continuity of series (where a line is drawn across a column between two consecutive figures)

Geoff Smith
Regional Director
New South Wales

NSW OVERVIEW

EMPLOYMENT	Employment in NSW in February 2001 was a seasonally adjusted figure of 3,022,000. National employment in February 2001 was 9,098,600.
UNEMPLOYMENT	Unemployment in NSW was a seasonally adjusted figure of 200,500 in February 2001. The unemployment rate was 6.2%, an increase of 0.3 percentage points from January 2001. The national unemployment rate was 6.9%, an increase of 0.3 percentage points from January 2001.
INDUSTRIAL DISPUTES	In NSW in December 2000 there were 4,400 working days lost due to industrial disputes, a decrease of 52.2% on the working days lost in the previous month. Nationally there were 11,800 working days lost due to industrial disputes in December 2000.
JOB VACANCIES	There were 32,000 job vacancies in NSW in February 2001, a decrease of 20.8% on the previous period. Nationally there were 95,500 vacancies.
AVERAGE WEEKLY EARNINGS	Average weekly earnings in NSW in November 2000 were \$844.70 compared with \$802.60 for Australia (full-time adult ordinary time earnings, seasonally adjusted).
BUILDING APPROVALS	The seasonally adjusted number of new dwelling units approved for NSW in January 2001 decreased by 1.3% from the previous month to 2,903 dwelling units. This was a decrease of 34.8% on the corresponding month of the previous year. Nationally, there were 10,020 new dwelling units, a decrease of 3.7% from the previous month.
RETAIL	In seasonally adjusted terms, total retail sales for NSW in January 2001 was \$4,465.5 million. This was an increase of 1.0% on the previous month.
NEW MOTOR VEHICLE REGISTRATIONS	New motor vehicle registrations for NSW in seasonally adjusted terms in February 2001 decreased by 5.1% compared to the previous month to 20,990 registrations.
TOURISM	In NSW, the number of room nights occupied in the December quarter 2000 increased by 2.2% on the December quarter 1999, and the takings from accommodation were 16.6% higher.
FINANCE	The seasonally adjusted value of housing finance commitments for owner occupation in NSW in January 2001 was \$2,644 million, a decrease of 1.7% on the previous month and a decrease of 2.5% on January 2000.
INVESTMENT	The total actual private fixed capital expenditure, current prices (trend) for NSW in the December quarter 2000 was \$3,675 million, a decrease of 3.6% from the September quarter 2000 and an increase of 1.7% from the corresponding period of the previous year.
IMPORTS AND EXPORTS	The customs value of imports into NSW during January 2001 was \$3,883 million, a decrease of 8.5% on December 2000. The value of exports (FOB) from NSW in January 2001 was \$1,546 million, a decrease of 23.4% over the same period.

MAIN FEATURES

BUILDING APPROVALS

There has been an increase in the number of new houses approved in the month of January 2001. The number of new houses (seasonally adjusted) was 1,575 in NSW, an increase of 6.3% on the previous month and a decrease of 43.1% from the corresponding period of the previous year. The number of new dwelling units (seasonally adjusted) in January 2001 was 2,903, a decrease of 1.3% on December 2000 and a decrease of 34.8% from January 2000. Nationally, the number of new dwelling units was 10,020, a decrease of 3.7% from December 2000 and a decrease of 40.0% from January 2000.

From July 2000, value data for both residential and non-residential building approval is on a GST inclusive basis.

For NSW in January 2001 the seasonally adjusted value of new residential building was \$429.8 million, an increase of 12.2% from December 2000 and a decrease of 32.1% from January 2000. The value (seasonally adjusted) of alterations and additions to residential building in January 2001 decreased 51.8% from the previous month to \$74.5 million.

The value (in original terms) of non-residential building in NSW increased 183.4% from December 2000 to \$552.9 million and increased 52.9% from January 2000. The value of all building (in original terms) in NSW was \$1,000.6 million, an increase of 47.9% from December 2000. Nationally, the value of all building was \$2,592.3 million which represented an increase of 8.2% on December 2000 but a decrease of 11.1% on the corresponding period of the previous year.

TOURISM

Demand for accommodation across NSW for room nights occupied in licensed hotels, motels and guest houses and serviced apartments with 15 or more rooms or units in the December quarter 2000 increased by 2.2% on the December quarter 1999 to 3,498,000. Quarterly movements showed a decrease of 1.3% from the previous September quarter. In NSW the room occupancy rates for licensed hotels, motels and guest houses and serviced apartments in the December quarter 2000 were lower than those recorded in December quarter 1999 (down by 2.2 percentage points to 58.7%).

The Sydney Tourism Region (TR) experienced a 6.8% increase in room nights occupied in licensed hotels, motels and guest houses and serviced apartments between December quarter 1999 and December quarter 2000. In this TR, the room occupancy rate for the December quarter 2000 for accommodation establishments overall was 68.8%, a decrease of 3.5 percentage points over the year, however room supply increased by 11.5% over the same period.

In NSW takings from accommodation increased in aggregate for each accommodation type in the December quarter 2000 compared with the December quarter 1999 with an overall increase of 16.6% to \$460.8 million. In the Sydney Tourism Region, takings from accommodation were \$334.4 million for the December quarter 2000 accounting for 72.6% of the total for NSW.

LIST OF TABLES AND GRAPHS

page

POPULATION	1 Estimated resident population, NSW	6
LABOUR	2 Labour data, latest time period, NSW and Australia	7
	3 Labour data, time series, NSW	7
	4 Labour force status of the civilian population, NSW	8
	5 Graph: Unemployment rates, NSW and Australia	9
	6 Coal and electricity production, latest time period, NSW and Australia	10
PRODUCTION	7 Coal and electricity production, time series, NSW	10
BUILDING	8 Building approvals, latest time period, NSW and Australia	11
	9 Building approvals, time series, NSW	11
RETAIL TRADE	10 Turnover of retail establishments, latest time period, NSW and Australia	12
	11 Turnover of retail establishments, seasonally adjusted, time series, NSW	12
NEW MOTOR VEHICLE REGISTRATIONS	12 New motor vehicle registrations, latest time period, NSW and Australia	13
	13 New motor vehicle registrations, seasonally adjusted, time series, NSW	13
TOURISM	14 Accommodation establishments, latest time period, NSW and Australia	14
	15 Accommodation establishments, time series, Sydney and NSW	14
	16 Graph: Hotels, motels etc., monthly room occupancy rates, Sydney Tourism Region and NSW	14
CONSUMER AND PRODUCER PRICE INDEXES	17 Consumer and producer price indexes, latest time period, NSW and Australia	15
	18 Consumer and producer price indexes, time series, NSW	15
	19 Graph: Consumer Price Index, Sydney and average of 8 capital cities	15
FINANCE	20 Finance commitments, latest time period, NSW and Australia	16
	21 Finance commitments, time series, NSW	16
STATE GOVERNMENT FINANCE	22 Government finance, general government sector, monthly operating statement, NSW	17
INVESTMENT	23 Actual private new fixed capital expenditure, latest time period, NSW and Australia	18
	24 Actual private new fixed capital expenditure, time series, NSW	18
	25 Graph: Actual private new fixed capital expenditure by type of asset, trend estimate, NSW	18
INTERNATIONAL TRADE	26 Imports and exports, latest time period, NSW and Australia	19
	27 Imports and exports, time series, NSW	19

1 ESTIMATED RESIDENT POPULATION — NSW

	<i>Estimated resident population at end of period</i>			<i>Increase during period</i>			<i>Mean estimated resident population for year ended</i>	
	<i>Males</i>	<i>Females</i>	<i>Persons</i>	<i>Natural increase(a)</i>	<i>Net estimated migration</i>	<i>Total increase</i>	<i>30 June</i>	<i>31 December</i>
	<i>'000</i>	<i>'000</i>	<i>'000</i>	<i>'000</i>	<i>'000</i>	<i>'000</i>	<i>'000</i>	<i>'000</i>
1997	3 129.0	3 171.5	6 300.5	40.9	17.6	58.5	6 240.9	6 276.1
1998	3 164.5	3 204.0	6 368.5	39.9	28.1	68.1	6 303.5	6 335.7
1999	r 3 198.5	r 3 235.1	r 6 433.6	42.3	25.8	68.2	6 367.3	r 6 397.6
2000	n.y.a.	n.y.a.	n.y.a.	n.y.a.	n.y.a.	n.y.a.	6 430.0	n.y.a.
1999								
March qtr	3 171.0	3 210.5	6 381.5	10.7	2.3	13.0
June qtr	3 179.2	3 217.5	6 396.7	10.1	5.1	15.2
September qtr	3 187.8	3 224.7	6 412.5	8.1	7.7	15.8
December qtr	3 198.5	3 235.1	6 433.6	13.4	7.7	21.1
2000								
March qtr	3 205.0	3 240.6	6 445.7	7.6	4.5	12.1
June qtr	3 214.6	3 248.9	6 463.5	12.5	5.2	17.8

(a) Excess of live births over deaths.

Source: Australian Demographic Statistics (Cat. no. 3101.0).

2 LABOUR — NSW AND AUSTRALIA

	Unit	Latest period	New South Wales				Australia		
			Latest figure	Change from prior period	Change from same period prior year	Latest figure	Change from prior period	Change from same period prior year	
				%	%		no.	%	%
Employed persons (seasonally adjusted)	'000	February 2001	3 022.0	-0.1	0.7	9 098.6	—	1.6	
Unemployed persons (seasonally adjusted)	'000	February 2001	200.5	4.9	6.9	673.8	4.1	4.4	
Labour force (seasonally adjusted)	'000	February 2001	3 222.5	0.2	1.0	9 772.4	0.3	1.8	
Participation rate (seasonally adjusted)	%	February 2001	62.2	0.2	—	63.7	0.2	0.5	
Unemployment rate (seasonally adjusted)	%	February 2001	6.2	5.1	5.1	6.9	4.5	3.0	
Industrial disputes — working days lost	'000	December 2000	4.4	-52.2	-84.9	11.8	-44.3	-71.3	
Job vacancies	'000	February 2001	32.0	-20.8	-31.0	95.5	-12.1	-15.3	
Average weekly employee earnings — full-time adult ordinary time earnings (seasonally adjusted)	\$	November 2000	844.7	1.2	4.9	802.6	0.5	5.1	

Source: *Average Weekly Earnings, States and Australia* (Cat. no. 6302.0); *Industrial Disputes, Australia* (Cat. no. 6321.0); *Job Vacancies, Australia* (Cat. no. 6354.0); *Labour Force, Australia, Preliminary* (Cat. no. 6202.0).

3 LABOUR — NSW

	Seasonally adjusted(a)						
	Employed persons	Unemployed persons	Labour force	Participation rate	Unemployment rate	Industrial disputes (working days lost)	Job vacancies
	'000	'000	'000	%	%	'000	'000
1999							
December r	2 975.1	198.6	3 173.7	62.1	6.3	29.1	..
2000							
January r	2 981.7	189.3	3 171.0	62.0	6.0	7.5	..
February r	3 001.8	187.5	3 189.3	62.2	5.9	20.1	46.4
March r	3 013.6	192.0	3 205.6	62.5	6.0	11.8	..
April r	3 034.0	185.1	3 219.1	62.7	5.7	20.0	..
May r	3 049.2	184.9	3 234.1	62.9	5.7	47.1	41.8
June r	3 039.3	185.7	3 225.0	62.6	5.8	16.5	..
July r	3 054.8	173.9	3 228.7	62.6	5.4	7.5	..
August r	3 071.6	176.9	3 248.5	63.0	5.4	8.8	43.9
September r	3 055.3	177.8	3 233.1	62.6	5.5	8.3	..
October r	3 038.7	178.1	3 216.8	62.2	5.5	5.3	..
November r	3 022.2	183.5	3 205.7	62.0	5.7	9.2	40.4
December r	3 027.9	191.2	3 219.1	62.2	5.9	4.4	..
2001							
January r	3 024.1	191.2	3 215.3	62.1	5.9	n.y.a.	..
February	3 022.0	200.5	3 222.5	62.2	6.2	n.y.a.	32.0

(a) Seasonally adjusted estimates have been revised from February 1978 to reflect the annual reanalysis of seasonal factors which occurs in February each year. For further information please see the feature article in the February 2001 edition of *Labour Force, Australia* (Cat. no. 6203.0).

Source: *Industrial Disputes, Australia* (Cat. no. 6321.0); *Job Vacancies, Australia* (Cat. no. 6354.0); *Labour Force, Australia, Preliminary* (Cat. no. 6202.0).

4 LABOUR FORCE STATUS, NSW — ORIGINAL

	<i>Employed</i>		<i>Unemployed</i>		<i>Labour force</i>	<i>Not in labour force</i>	<i>Civilian population aged 15 years and over</i>	<i>Unemployment rate(a)</i>	<i>Participation rate(b)</i>
	<i>Full-time workers</i>	<i>Total</i>	<i>Looking for full-time work</i>	<i>Total</i>					
	'000	'000	'000	'000					
MALES									
February									
1997	1 419.5	1 588.2	141.2	160.0	1 748.2	664.8	2 413.0	9.2	72.4
1998	1 432.9	1 600.3	127.7	149.3	1 749.6	696.4	2 446.1	8.5	71.5
1999	1 453.4	1 644.9	113.5	133.1	1 778.0	702.4	2 480.3	7.5	71.7
1999									
December	1 530.2	1 711.0	95.2	116.1	1 827.0	687.5	2 514.5	6.4	72.7
2000									
January	1 497.6	1 680.2	104.8	119.9	1 800.1	717.6	2 517.7	6.7	71.5
February	1 503.6	1 694.0	95.8	113.8	1 807.8	713.1	2 520.9	6.3	71.7
March	1 494.2	1 701.8	93.5	114.1	1 815.9	708.2	2 524.0	6.3	71.9
April	1 504.7	1 716.6	81.8	100.5	1 817.1	710.5	2 527.6	5.5	71.9
May	1 504.2	1 719.5	79.7	98.2	1 817.7	713.5	2 531.1	5.4	71.8
June	1 517.3	1 718.7	86.3	100.5	1 819.2	715.5	2 534.7	5.5	71.8
July	1 528.2	1 732.5	81.4	99.6	1 832.1	705.5	2 537.6	5.4	72.2
August	1 492.5	1 701.7	87.1	101.2	1 802.8	737.7	2 540.5	5.6	71.0
September	1 519.3	1 738.0	85.8	106.6	1 844.6	698.9	2 543.5	5.8	72.5
October	1 506.1	1 719.3	85.0	101.5	1 820.9	724.6	2 545.5	5.6	71.5
November	1 489.4	1 700.1	88.3	104.8	1 805.0	742.5	2 547.4	5.8	70.9
December	1 512.9	1 727.2	94.4	113.4	1 840.5	708.9	2 549.4	6.2	72.2
2001									
January	1 473.0	1 680.0	107.4	126.0	1 806.1	745.2	2 551.3	7.0	70.8
February	1 477.7	1 679.6	105.7	130.0	1 809.6	743.5	2 553.2	7.2	70.9
FEMALES									
February									
1997	727.8	1 196.2	79.4	125.0	1 321.1	1 183.4	2 504.6	9.5	52.7
1998	709.5	1 192.3	71.2	110.8	1 303.2	1 232.7	2 535.9	8.5	51.4
1999	738.4	1 236.4	67.4	104.5	1 340.9	1 226.8	2 567.7	7.8	52.2
1999									
December	788.4	1 307.0	54.7	80.9	1 387.9	1 210.4	2 598.3	5.8	53.4
2000									
January	776.9	1 257.2	55.3	80.7	1 337.9	1 262.8	2 600.7	6.0	51.4
February	755.7	1 282.3	57.0	98.2	1 380.5	1 222.7	2 603.2	7.1	53.0
March	771.1	1 307.8	57.0	92.4	1 400.2	1 205.4	2 605.6	6.6	53.7
April	791.3	1 318.7	52.1	82.4	1 401.1	1 207.3	2 608.4	5.9	53.7
May	784.9	1 324.9	53.2	83.7	1 408.7	1 202.5	2 611.2	5.9	53.9
June	783.4	1 326.0	39.8	76.1	1 402.2	1 211.8	2 614.0	5.4	53.6
July	812.3	1 344.0	36.0	60.9	1 404.8	1 211.8	2 616.7	4.3	53.7
August	787.2	1 329.4	40.1	72.3	1 401.7	1 217.6	2 619.3	5.2	53.5
September	805.6	1 356.4	43.0	73.9	1 430.3	1 191.7	2 622.0	5.2	54.6
October	784.8	1 332.5	40.1	67.7	1 400.2	1 223.3	2 623.5	4.8	53.4
November	787.6	1 318.1	43.6	70.6	1 388.7	1 236.2	2 624.9	5.1	52.9
December	799.2	1 344.3	53.4	76.2	1 420.5	1 205.9	2 626.4	5.4	54.1
2001									
January	785.8	1 298.3	48.3	77.1	1 375.4	1 252.2	2 627.7	5.6	52.3
February	790.6	1 316.1	59.6	96.0	1 412.1	1 216.9	2 629.0	6.8	53.7

For footnotes see end of table.

4 LABOUR FORCE STATUS, NSW — ORIGINAL — continued

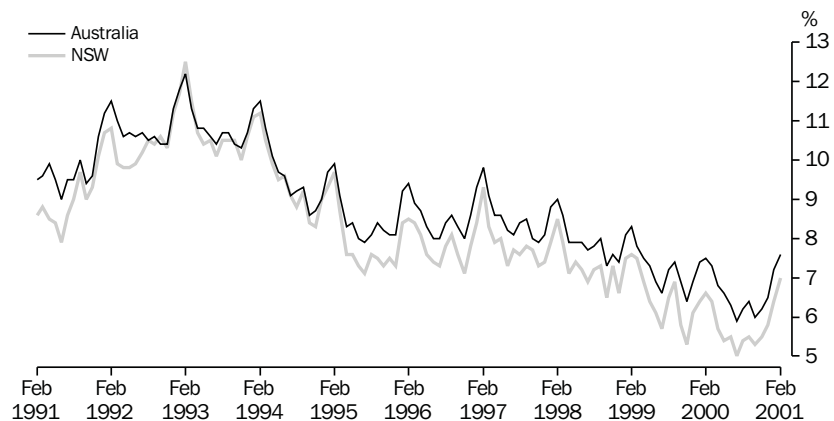
	<u>Employed</u>		<u>Unemployed</u>		<u>Labour force</u>	<u>Not in labour force</u>	<u>Civilian population aged 15 years and over</u>	<u>Unemployment rate(a)</u>	<u>Participation rate(b)</u>
	<u>Full-time workers</u>	<u>Total</u>	<u>Looking for full-time work</u>	<u>Total</u>					
	'000	'000	'000	'000					
PERSONS									
February									
1997	2 147.3	2 784.4	220.6	284.9	3 069.3	1 848.3	4 917.6	9.3	62.4
1998	2 142.4	2 792.7	198.9	260.1	3 052.8	1 929.1	4 981.9	8.5	61.3
1999	2 191.8	2 881.3	180.9	237.5	3 118.8	1 929.2	5 048.0	7.6	61.8
1999									
December	2 318.6	3 017.9	149.9	197.0	3 214.9	1 897.9	5 112.8	6.1	62.9
2000									
January	2 274.5	2 937.4	160.1	200.6	3 138.0	1 980.4	5 118.4	6.4	61.3
February	2 259.3	2 976.3	152.8	212.0	3 188.3	1 935.7	5 124.0	6.6	62.2
March	2 265.4	3 009.6	150.4	206.5	3 216.1	1 913.6	5 129.7	6.4	62.7
April	2 296.0	3 035.3	133.9	182.9	3 218.2	1 917.8	5 136.0	5.7	62.7
May	2 289.1	3 044.4	132.8	181.9	3 226.3	1 916.0	5 142.3	5.6	62.7
June	2 300.6	3 044.7	126.0	176.6	3 221.3	1 927.3	5 148.6	5.5	62.6
July	2 340.5	3 076.5	117.4	160.5	3 237.0	1 917.3	5 154.3	5.0	62.8
August	2 279.7	3 031.1	127.2	173.4	3 204.6	1 955.3	5 159.9	5.4	62.1
September	2 324.9	3 094.4	128.9	180.5	3 274.9	1 890.6	5 165.5	5.5	63.4
October	2 290.9	3 051.8	125.1	169.2	3 221.1	1 947.9	5 169.0	5.3	62.3
November	2 277.0	3 018.2	131.9	175.4	3 193.7	1 978.7	5 172.4	5.5	61.7
December	2 312.2	3 071.4	147.8	189.6	3 261.0	1 914.8	5 175.8	5.8	63.0
2001									
January	2 258.8	2 978.4	155.7	203.1	3 181.5	1 997.5	5 179.0	6.4	61.4
February	2 268.3	2 995.8	165.2	226.0	3 221.8	1 960.4	5 182.2	7.0	62.2

(a) The number of unemployed in each group expressed as a percentage of the labour force in the same group.

(b) The labour force in each group expressed as a percentage of the civilian population aged 15 years and over in the same group.

Source: Labour Force, Australia, Preliminary (Cat. no. 6202.0).

5 UNEMPLOYMENT RATE—ORIGINAL



Source: Labour Force, Australia, Preliminary (Cat. no. 6202.0)

6 COAL AND ELECTRICITY PRODUCTION, NSW AND AUSTRALIA — ORIGINAL

	Unit	Latest period	Latest figure	New South Wales		Australia		
				Change from prior period	Change from same period prior year	Change from prior period	Change from same period prior year	Latest figure
				%	%	%	%	%
Raw coal won								
Underground	'000 tonnes	Dec 2000	3 117	-45.1	-33.1	5 904	-33.6	-21.1
Open cut	'000 tonnes	Dec 2000	6 199	-20.8	-12.3	17 025	-5.9	1.1
Total	'000 tonnes	Dec 2000	9 316	-31.0	-20.6	22 929	-15.0	-5.7
Electricity	mill. kWh	Dec qtr 2000	16 749	-13.2	9.6	45 977	-6.9	3.1

Source: Joint Coal Board for NSW and Australia from ABS unpublished statistics, Manufacturing Production, Australia (Cat. no. 8301.0).

7 COAL AND ELECTRICITY PRODUCTION, NSW — ORIGINAL

	Raw coal won			Electricity mill. kWh
	Underground	Open cut	Total	
	'000 tonnes	'000 tonnes	'000 tonnes	
1997-1998	58 299	75 710	134 009	61 804
1998-1999	51 158	80 209	131 367	63 743
1999-2000 r	52 591	79 700	132 292	65 934
1999				
July	4 560	6 706	11 266	16 977
August	3 861	6 442	10 303	
September	5 552	8 215	13 767	
October r	4 102	6 088	10 189	15 284
November r	4 340	6 213	10 553	
December r	4 662	7 066	11 728	
2000				
January	3 633	5 907	9 541	16 339
February	3 834	6 376	10 210	
March	4 799	6 549	11 348	
April	3 854	5 084	8 938	17 334
May	5 601	8 611	14 212	
June	3 793	6 443	10 237	
July	3 958	6 161	10 119	19 289
August	5 609	8 310	13 919	
September r	3 838	7 198	11 036	
October	4 523	6 976	11 499	16 749
November	5 679	7 830	13 509	
December	3 117	6 199	9 316	

Source: Joint Coal Board, Manufacturing Production, Australia (Cat. no. 8301.0).

8 BUILDING APPROVALS — NSW AND AUSTRALIA

	Unit	Latest period	New South Wales			Australia		
			Latest figure	Change from prior period %	Change from same period prior year %	Latest figure	Change from prior period %	Change from same period prior year %
Number of dwelling units(a) (seasonally adjusted(b))								
New houses	no.	Jan 2001	1 575	6.3	-43.1	6 429	2.3	-43.5
Total	no.	Jan 2001	2 903	-1.3	-34.8	10 020	-3.7	-40.0
Value of new residential building (seasonally adjusted)	\$m	Jan 2001	429.8	12.2	-32.1	1 366.0	-6.3	-37.1
Value of alterations and additions to residential building(c) (seasonally adjusted)	\$m	Jan 2001	74.5	-51.8	-20.4	270.7	-14.0	-9.3
Value of non-residential building(d) (original)	\$m	Jan 2001	552.9	183.4	52.9	1 167.3	33.3	30.4
Value of all building (original)	\$m	Jan 2001	1 000.6	47.9	4.1	2 592.3	8.2	-11.1

(a) Includes dwelling units approved as part of the construction of non-residential building and alterations and additions to existing buildings (including conversions to dwelling units).

(b) Seasonally adjusted and trend estimates to November 2000 have been revised. See Building Approvals, Australia (Cat. no. 8731.0).

(c) Valued at \$10,000 or more. Includes conversions of existing buildings into residential buildings.

(d) Valued at \$50,000 or more.

Source: Building Approvals, Australia (Cat. no. 8731.0).

9 BUILDING APPROVALS — NSW

	Number of dwelling units(a), seasonally adjusted				Value of building approvals(b)			
	New houses		Total		Seasonally adjusted		Original	
	Private sector	Total	Private sector	Total	Alterations and additions to residential building	Non-residential building(d)	All building	
	no.	no.	no.	no.	\$m	\$m	\$m	\$m
1997-1998	5 910.9	13 348.6
1998-1999	4 555.3	12 026.7
1999-2000	4 477.3	12 560.8
1999								
November	2 823	2 842	4 316	4 389	528.1	105.9	276.1	1 009.1
December	3 049	3 066	4 605	4 651	591.7	114.7	283.0	983.4
2000								
January	2 755	2 769	4 359	4 452	633.1	93.6	361.6	961.1
February	2 914	2 930	4 305	4 419	574.7	124.9	284.0	961.5
March	2 810	2 820	4 281	4 310	547.3	127.3	452.2	1 124.8
April	2 191	2 212	3 606	3 747	484.6	121.9	533.7	1 064.1
May	2 048	2 066	3 870	3 955	533.6	124.3	311.5	1 098.8
June	1 876	1 883	3 162	3 285	447.8	83.3	350.0	860.9
July	1 302	1 309	1 829	1 916	283.5	75.0	286.2	667.3
August	1 472	1 481	2 370	2 439	372.0	78.2	274.5	761.4
September	1 403	1 409	2 699	2 784	398.0	81.3	309.4	765.5
October	1 725	1 735	3 529	3 573	458.5	115.6	380.8	938.8
November	1 555	1 564	2 984	3 064	410.6	83.1	269.9	857.0
December	1 470	1 482	2 840	2 940	382.9	154.6	195.1	676.5
2001								
January	1 567	1 575	2 857	2 903	429.8	74.5	552.9	1 000.6

(a) Includes dwelling units approved as part of the construction of non-residential building and alterations and additions to existing buildings (including conversions to dwelling units).

(b) From July 2000, value data for both residential and non-residential building approvals will be on a GST inclusive basis.

(c) Valued at \$10,000 or more. Includes conversions of existing buildings into residential buildings.

(d) Valued at \$50,000 or more.

Source: Building Approvals, Australia (Cat. no. 8731.0).

10 TURNOVER OF RETAIL ESTABLISHMENTS(a), NSW AND AUSTRALIA(b) — SEASONALLY ADJUSTED

	Latest period	New South Wales			Australia		
		Latest figure	Change from prior period	Change from same period prior year	Latest figure	Change from prior period	Change from same period prior year
		\$m	%	%	\$m	%	%
Food retailing	Jan 2001	1 646.6	0.6	8.0	5 133.6	0.6	6.3
Department stores	Jan 2001	382.1	-2.7	2.9	1 083.2	-3.4	2.2
Clothing and soft good retailing	Jan 2001	300.2	-3.9	-4.5	856.7	-2.4	2.5
Household good retailing	Jan 2001	491.3	0.8	13.3	1 478.0	-0.1	5.3
Recreational good retailing	Jan 2001	221.4	5.1	13.5	620.4	5.6	4.6
Other retailing	Jan 2001	451.6	0.6	7.8	1 432.1	1.2	14.4
Hospitality and services	Jan 2001	972.2	4.3	15.5	2 307.1	4.0	11.6
Total value of retail sales	Jan 2001	4 465.5	1.0	8.9	12 911.2	0.9	7.2

(a) The figures shown are derived from a monthly survey of retail establishments. Excludes motor vehicle, boat and caravan dealers, service stations, smash repairers, tyre and battery retailers, bread and milk vendors, footwear repairers and electrical appliance repairers n.e.c. Retail establishments which do not have employees are excluded from the survey. Turnover includes retail sales, wholesale sales, takings from repairs, meals and hiring of goods; and commissions from agency activity (e.g. commissions received from collecting dry cleaning, selling lottery tickets etc.).

(b) Data from July 2000 reference month onwards are recorded inclusive of GST.

Source: Retail Trade, Australia (Cat. no. 8501.0).

11 TURNOVER OF RETAIL ESTABLISHMENTS(a), NSW(b) — SEASONALLY ADJUSTED(c)

	Food retailing	Department stores	Clothing and soft good retailing	Household good retailing	Recreational good retailing	Other retailing	Hospitality and services	Total
	\$m	\$m	\$m	\$m	\$m	\$m	\$m	\$m
1999								
November	1 597.9	375.8	328.6	434.6	184.1	439.2	847.5	4 207.6
December	1 607.2	375.3	321.8	420.5	188.4	436.5	865.1	4 214.9
2000								
January	1 524.1	371.3	314.4	433.6	195.0	419.0	842.0	4 099.5
February	1 543.8	375.7	292.6	457.1	196.9	431.5	863.1	4 160.8
March	1 554.3	374.0	320.6	452.3	199.8	427.4	871.6	4 200.0
April	1 560.4	375.9	301.9	447.1	201.9	428.0	873.2	4 188.3
May	1 553.4	382.7	313.9	462.2	207.6	439.4	873.2	4 232.4
June	1 589.7	466.1	373.1	580.9	204.7	479.7	888.9	4 583.1
July	1 602.0	299.1	276.8	427.3	221.6	394.9	930.4	4 152.0
August	1 641.3	398.0	300.4	471.6	213.5	424.8	993.4	4 443.0
September	1 649.7	394.3	366.4	465.9	207.8	461.5	1 056.8	4 602.3
October	1 634.0	387.0	309.7	471.3	212.4	449.7	983.5	4 447.6
November	1 612.0	373.5	306.2	483.4	211.0	440.8	956.0	4 383.0
December	1 637.3	392.6	312.3	487.3	210.7	448.7	931.8	4 420.7
2001								
January	1 646.6	382.1	300.2	491.3	221.4	451.6	972.2	4 465.5

(a) The figures shown are derived from a monthly survey of retail establishments. Excludes motor vehicle, boat and caravan dealers, service stations, smash repairers, tyre and battery retailers, bread and milk vendors, footwear repairers and electrical appliance repairers n.e.c. Retail establishments which do not have employees are excluded from the survey. Turnover includes retail sales, wholesale sales, takings from repairs, meals and hiring of goods; and commissions from agency activity (e.g. commissions received from collecting dry cleaning, selling lottery tickets etc.).

(b) Data from July 2000 reference month onwards are recorded inclusive of GST.

(c) Data for previous months have been revised due to concurrent seasonal adjustment methodology. See Explanatory Notes in Retail Trade, Australia (Cat. no. 8501.0).

Source: Retail Trade, Australia (Cat. no. 8501.0).

12 NEW MOTOR VEHICLE REGISTRATIONS(a), NSW AND AUSTRALIA — SEASONALLY ADJUSTED(b)

	Latest period	New South Wales				Australia	
		Latest figure no.	Change from prior period	Change from same period prior year	Latest figure no.	Change from prior period	Change from same period prior year
			%	%		%	%
Passenger vehicles	Feb 2001	17 707	-4.7	-4.1	51 790	-6.9	-0.3
Other vehicles (excluding motor cycles)	Feb 2001	3 283	-7.0	-15.1	10 032	-6.0	-8.7
Total registrations (excluding motor cycles)	Feb 2001	20 990	-5.1	-6.0	61 822	-6.8	-1.7

(a) Includes vehicles (other than those of the defence forces) owned by Government departments and authorities. Excludes mobile plant and equipment, tractors, trailers and non-motorised caravans.

(b) The changes to the seasonally adjusted series result from the annual re-estimation of seasonal factors.

Source: *New Motor Vehicle Registrations, Australia, Preliminary (Cat. no. 9301.0)*.

13 NEW MOTOR VEHICLE REGISTRATIONS(a), NSW — SEASONALLY ADJUSTED(b)

	Passenger vehicles no.	Other vehicles (excluding motor cycles) no.	Total (excluding motor cycles) no.
1999			
December	19 017	4 230	23 247
2000			
January	17 846	3 751	21 597
February	18 467	3 865	22 332
March	17 932	3 538	21 470
April	17 608	3 581	21 189
May	16 985	3 670	20 655
June	13 466	3 651	17 117
July	23 670	3 066	26 736
August	23 809	3 616	27 425
September	19 247	3 387	22 634
October	18 823	3 328	22 151
November	19 611	3 063	22 673
December	21 804	3 430	25 234
2001			
January	18 585	3 529	22 114
February	17 707	3 283	20 990

(a) Includes vehicles (other than those of the defence forces) owned by Government departments and authorities. Excludes mobile plant and equipment, tractors, trailers and non-motorised caravans.

(b) The changes to the seasonally adjusted series result from the annual re-estimation of seasonal factors.

Source: *New Motor Vehicle Registrations, Australia, Preliminary (Cat. no. 9301.0)*.

14 ACCOMMODATION ESTABLISHMENTS(a) NSW AND AUSTRALIA — ORIGINAL

	Unit	Latest period	Latest figure	New South Wales		Australia		
				Change from prior period	Change from same period prior year	Change from prior period	Change from same period prior year	
				%	%	%	%	
Room nights	'000	Dec qtr 2000	3 498.0	-1.3	2.2	10 543.0	0.9	1.2
Room occupancy rate	%	Dec qtr 2000	58.7	-1.7	-3.6	58.8	0.7	-1.5
Takings(b)	\$'000	Dec qtr 2000	460 756	-17.0	16.6	1 239 908	-4.8	11.5

(a) Licensed hotels with facilities, motels and guest houses and serviced apartments with 15 or more rooms or units.

(b) Includes GST.

Source: *Tourist Accommodation, Australia (Cat. no. 8635.0)*.

15 ACCOMMODATION ESTABLISHMENTS(a) SYDNEY AND NSW — ORIGINAL

	Sydney Tourism Region(b)			New South Wales		
	Room nights	Room occupancy rate	Takings(c)	Room nights	Room occupancy rate	Takings
	'000	%	\$'000	'000	%	\$'000
1999						
September qtr	1 865.9	71.6	247 543	3 345.0	61.1	375 014
December qtr	1 962.5	72.3	276 165	3 423.1	60.9	395 165
2000						
March qtr	1 980.0	71.7	279 374	3 388.1	60.3	397 869
June qtr	1 902.6	67.1	258 225	3 324.0	58.1	374 005
September qtr	2 093.6	69.6	412 378	3 543.3	59.7	555 244
December qtr	2 096.0	68.8	334 433	3 498.0	58.7	460 756

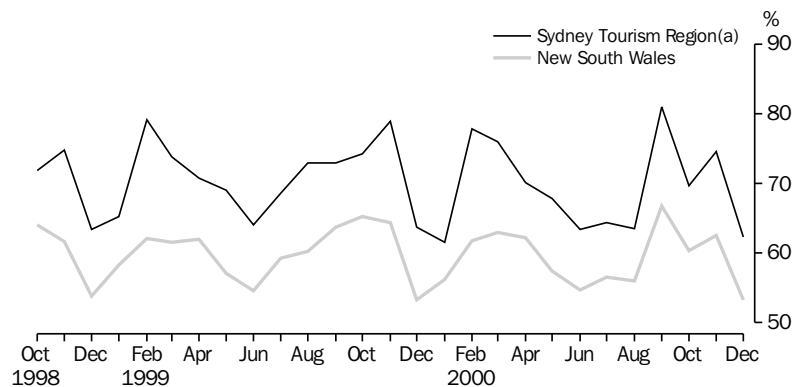
(a) Licensed hotels with facilities, motels and guest houses and serviced apartments with 15 or more rooms or units.

(b) Excludes Gosford, Wyong and Blue Mountains Statistical Local Areas.

(c) Takings after 1 July 2000 are on a GST inclusive basis.

Source: *Tourist Accommodation, Small Area Data, New South Wales (Cat. no. 8635.1.40.001)*.

16 ACCOMMODATION ESTABLISHMENTS, MONTHLY ROOM OCCUPANCY RATE—ORIGINAL



(a) Excludes Gosford, Wyong and Blue Mountains Statistical Local Areas.

Source: *Tourist Accommodation, Small Area Data, NSW (Prod. no. 8635.1.40.001)*.

17 CONSUMER AND PRODUCER PRICE INDEXES — NSW AND AUSTRALIA

	Unit	Latest period	Latest figure	New South Wales(a)		Australia(b)		
				Change from prior period	Change from same period prior year	Change from prior period	Change from same period prior year	
				%	%	Latest figure	%	%
Consumer Price Index (all groups)	1989-90 =100.0	Dec qtr 2000	132.2	0.5	6.0	131.3	0.3	5.8
Price index of materials used in house building (all groups)	1989-90 =100.0	Dec qtr 2000	129.8	-0.2	4.3	124.4	-0.1	2.4
Price index of materials used in building other than house building (all groups)	1989-90 =100.0	Dec qtr 2000	115.7	0.3	0.3	116.3	0.7	0.8

(a) Refers to State capital city — Sydney.

(b) For the Consumer Price Index this is the weighted average of eight capital cities and for the other two indexes, the weighted average of the six State capital cities.

Source: Consumer Price Index, Australia (Cat. no. 6401.0); Price Index of Materials Used in Building Other Than House Building, Six State Capital Cities (Cat. no. 6407.0); Price Index of Materials Used in House Building, Six State Capital Cities (Cat. no. 6408.0).

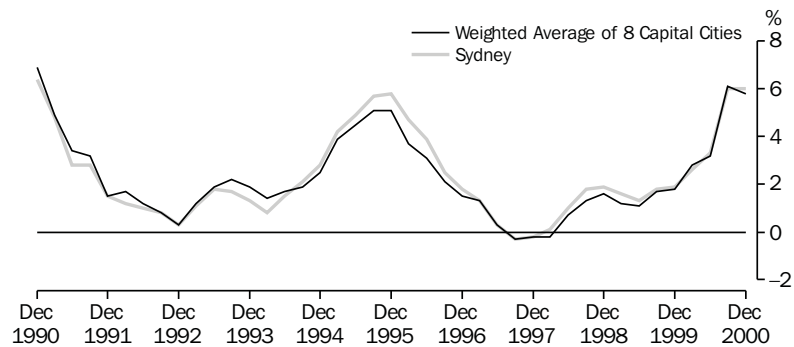
18 CONSUMER AND PRODUCER PRICE INDEXES — NSW(a)

	Consumer Price Index, all groups	Price Index of materials used in house building, all groups	Price Index of materials used in building other than house building, all groups
	1989-90 = 100.0	1989-90 = 100.0	1989-90 = 100.0
1999			
September qtr	124.1	123.7	115.1
December qtr	124.7	124.4	115.3
2000			
March qtr	125.8	128.0	116.4
June qtr	127.0	131.2	117.3
September qtr	131.6	130.0	115.4
December qtr	132.2	129.8	115.7

(a) Refers to State capital city — Sydney.

Source: Consumer Price Index, Australia (Cat. no. 6401.0); Price Index of Materials Used in Building Other Than House Building, Six State Capital Cities (Cat. no. 6407.0); Price Index of Materials Used in House Building, Six State Capital Cities (Cat. no. 6408.0).

19 CONSUMER PRICE INDEX, ANNUAL RATE OF CHANGE



Source: Consumer Price Index (Cat. no. 6401.0).

20 SECURED HOUSING FINANCE COMMITMENTS TO INDIVIDUALS FOR OWNER OCCUPATION
— NSW AND AUSTRALIA

	Latest period	New South Wales			Australia		
		Latest figure	Change from prior period	Change from same period prior year	Latest figure	Change from prior period	Change from same period prior year
			\$m	%		%	\$m
Lending commitments for the construction or purchase of dwellings —							
Construction of dwellings	Jan 2001	121	-15.4	-46.5	462	-9.4	-38.7
Purchase of newly erected dwellings	Jan 2001	97	10.2	38.6	224	7.7	20.4
Purchase of established dwellings(a)	Jan 2001	1 497	-11.3	6.6	3 565	-8.7	3.8
Refinancing of existing dwellings	Jan 2001	426	-11.8	37.9	1 051	-11.0	31.5
Lending commitments for alterations and additions	Jan 2001	79	-1.3	-4.8	213	-13.4	—
Total lending commitments to individuals for housing(b)	Jan 2001	2 141	-10.9	6.5	5 302	-8.6	2.5
Total lending commitments to individuals for housing (seasonally adjusted)(b)	Jan 2001	2 644	-1.7	-2.5	6 073	-4.3	-7.2

(a) Excludes refinancing.

(b) Excludes alterations and additions.

Source: Housing Finance for Owner Occupation, Australia (Cat. no. 5609.0).

21 SECURED HOUSING FINANCE COMMITMENTS TO INDIVIDUALS FOR OWNER OCCUPATION — NSW

	Lending commitments for the construction or purchase of dwellings					Total lending commitments to individuals for housing(b)	
	Construction of dwellings	Purchase of newly erected dwellings	Purchase of established dwellings(a)	Refinancing of existing dwellings	Lending commitments for alterations and additions	Original	Seasonally adjusted
						\$m	\$m
1997–1998	2 625	1 280	14 445	3 573	1 174	21 923	..
1998–1999	2 990	1 147	16 761	4 026	1 126	24 925	..
1999–2000	3 268	1 129	21 637	4 993	1 271	31 027	..
1999							
November	329	115	2 122	460	120	3 026	2 816
December	275	90	1 893	415	105	2 672	2 768
2000							
January	226	70	1 404	309	83	2 010	2 713
February	324	103	1 759	423	114	2 609	2 656
March	296	101	1 956	488	123	2 842	2 492
April	213	77	1 581	358	94	2 229	2 407
May	246	94	1 909	524	119	2 772	2 402
June	197	86	1 629	474	105	2 386	2 232
July	170	71	1 436	451	89	2 129	2 166
August	166	88	1 710	480	91	2 444	2 336
September	152	83	1 467	418	84	2 120	2 165
October r	151	65	1 397	492	90	2 105	2 123
November r	160	82	1 757	542	85	2 542	2 357
December r	143	88	1 688	483	80	2 402	2 690
2001							
January	121	97	1 497	426	79	2 141	2 644

(a) Excludes refinancing.

(b) Excludes alterations and additions.

Source: Housing Finance for Owner Occupation, Australia (Cat. no. 5609.0).

22 NSW GOVERNMENT FINANCE, GENERAL GOVERNMENT SECTOR(a)

	Budget 12 months to 30/06/2001 \$m	Actual 7 months to 31/01/2001 \$m
State revenues		
Taxation	12 412	7 211
Commonwealth grants	12 780	7 073
Financial distributions	1 210	725
Fines, regulatory fees and other	792	522
<i>Total state revenues</i>	27 194	15 531
Operating revenues		
Sale of goods and services	2 171	1 307
Investment income	391	335
Grants and contributions	421	340
Other revenue	280	176
<i>Total operating revenues</i>	3 263	2 158
Expenses		
Employee related — superannuation	1 540	905
Employee related — other	12 157	6 980
Other operating	6 765	3 826
Maintenance	1 120	529
Depreciation and amortisation	995	827
Recurrent grants and subsidies	3 944	2 438
Capital grants and subsidies	1 397	667
Finance costs	1 287	869
<i>Total expenses</i>	29 205	17 041
Gain/(loss) on sale of non-current assets	-14	17
Net cost of services	25 956	14 866
Surplus (underlying)	1 238	665
Abnormal items	2 400	2 582
Surplus/(deficit) for the year	3 638	3 247
less valuation gains	-1 888	-2 235
GFS net operating balance	1 750	1 012
less capital acquisitions	-2 493	-1 341
plus depreciation	995	827
plus asset sales & other	407	82
<i>GFS net lending</i>	659	580

(a) Prior to the 2000–2001 Budget, NSW Government Finance Statistics were published on a cash basis. Monthly Government Finance Statistics reporting has now moved to an accruals framework.

Source: Financial Statement released by NSW Treasury. Figures may differ from data published in annual ABS publications.

23 ACTUAL PRIVATE NEW FIXED CAPITAL EXPENDITURE, CURRENT PRICES, NSW AND AUSTRALIA — TREND

Type of asset	Latest period	New South Wales			Australia		
		Latest figure	Change from prior period	Change from same period prior year	Latest figure	Change from prior period	Change from same period prior year
		\$m	%	%	\$m	%	%
New buildings and structures	Dec qtr 2000	836	-7.4	-12.2	2 625	-7.2	-4.9
Equipment, plant and machinery	Dec qtr 2000	2 839	-2.5	6.7	7 464	-0.5	-1.7
Total	Dec qtr 2000	3 675	-3.6	1.7	10 089	-2.4	-2.5

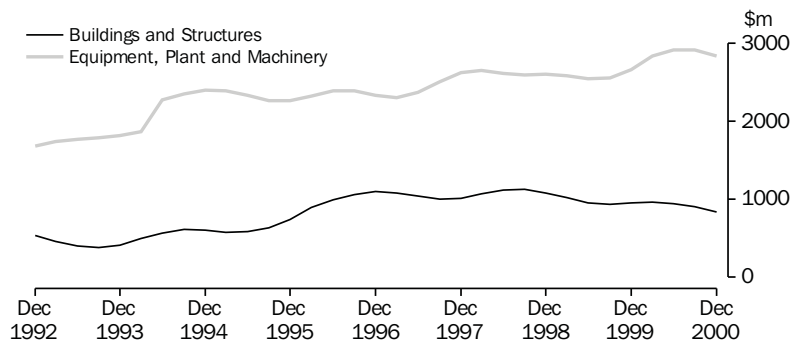
Source: Private New Capital Expenditure, State Estimates (Cat. no. 5646.0).

24 ACTUAL PRIVATE NEW FIXED CAPITAL EXPENDITURE, CURRENT PRICES — NSW, TREND

	Type of asset		Total
	New buildings and structures	Equipment, plant and machinery	
	\$m	\$m	
1999			
September qtr	935	2 559	3 494
December qtr	952	2 661	3 613
2000			
March qtr	960	2 838	3 798
June qtr	944	2 917	3 861
September qtr	903	2 911	3 814
December qtr	836	2 839	3 675

Source: Private New Capital Expenditure, State Estimates (Cat. no. 5646.0).

25 ACTUAL PRIVATE NEW FIXED CAPITAL EXPENDITURE, CURRENT PRICES, NSW — TREND



Source: Private New Capital Expenditure, State Estimates (Cat. no. 5646.0).

26 INTERNATIONAL TRADE, IMPORTS(a) AND EXPORTS(b) — NSW AND AUSTRALIA

	Latest period	New South Wales			Australia		
		Latest figure	Change from prior period	Change from same period prior year	Latest figure	Change from prior period	Change from same period prior year
		\$m	%	%	\$m	%	%
Overseas imports into NSW	Jan 2001	3 883	-8.5	12.2	9 233	-0.2	13.9
Total overseas exports(c)	Jan 2001	1 546	-23.4	16.1	7 957	-18.6	24.1
Export commodities and SITC(d) code							
Meat and meat preparations (01)	Jan 2001	92	-12.4	35.5	293	-37.2	34.6
Cereals and cereal preparations (04)	Jan 2001	86	-26.9	26.8	334	-11.4	-10.8
Wool and other animal hair (268)	Jan 2001	61	-40.5	10.9	214	-27.7	14.0
Coal, coke and briquettes (32)	Jan 2001	312	1.2	19.9	872	-2.8	30.7
Iron and steel (67)	Jan 2001	9	-26.2	-81.9	40	-12.1	-49.1
Aluminium (684)	Jan 2001	123	-4.8	22.6	332	-16.0	14.2
Office machines and automatic data processing machines (75)	Jan 2001	18	-48.1	-15.2	29	-46.3	-13.3

(a) Figures shown are Customs value.

(b) Figures shown are Free On Board (FOB) values.

(c) Excludes re-exported goods.

(d) Standard International Trade Classification Revision 3.

Source: ABS unpublished data, International Trade database.

27 INTERNATIONAL TRADE, IMPORTS(a) AND EXPORTS(b) — NSW

	Overseas exports of SITC(c) commodities								
	Overseas imports into NSW	Total overseas exports(d)	Meat and meat preparations (01)	Cereals and cereal preparations (04)	Wool and other animal hair (268)	Coal, coke and briquettes (32)	Iron and steel (67)	Aluminium (684)	Office machines and automatic data processing machines (75)
	\$m	\$m	\$m	\$m	\$m	\$m	\$m	\$m	\$m
1998-1999	42 142	17 948	948	1 234	685	3 766	958	1 151	333
1999-2000	47 927	18 966	1 047	1 270	826	3 092	831	1 341	379
1999									
November	4 272	1 579	90	107	93	244	67	104	34
December	3 975	1 583	94	112	83	211	68	112	28
2000									
January	3 462	1 331	68	68	55	261	50	101	22
February	3 731	1 515	86	114	72	226	60	122	32
March	4 341	1 637	95	123	78	238	79	132	43
April	3 534	1 612	87	94	59	285	98	109	35
May	4 580	1 771	93	118	69	295	109	122	30
June	4 866	1 768	93	112	66	268	94	129	29
July	4 493	1 779	101	138	66	318	64	129	31
August	4 947	1 826	99	143	66	301	67	135	27
September	4 472	1 887	89	149	78	292	10	134	30
October	5 071	2 041	120	160	114	337	10	148	37
November	4 936	1 975	117	139	112	283	11	149	26
December	4 244	2 019	105	118	103	309	12	130	36
2001									
January	3 883	1 546	92	86	61	312	9	123	18

(a) Figures shown are Customs value.

(b) Figures shown are Free On Board (FOB) values.

(c) Standard International Trade Classification Revision 3.

(d) Excludes re-exported goods.

Source: ABS unpublished data, International Trade database.

FOR MORE INFORMATION...

- INTERNET* **www.abs.gov.au** the ABS web site is the best place to start for access to summary data from our latest publications, information about the ABS, advice about upcoming releases, our catalogue, and Australia Now—a statistical profile.
- LIBRARY* A range of ABS publications is available from public and tertiary libraries Australia-wide. Contact your nearest library to determine whether it has the ABS statistics you require, or visit our web site for a list of libraries.
- CPI INFOLINE* For current and historical Consumer Price Index data, call 1902 981 074 (call cost 77c per minute).
- DIAL-A-STATISTIC* For the latest figures for National Accounts, Balance of Payments, Labour Force, Average Weekly Earnings, Estimated Resident Population and the Consumer Price Index call 1900 986 400 (call cost 77c per minute).

INFORMATION SERVICE

Data which have been published and can be provided within five minutes are free of charge. Our information consultants can also help you to access the full range of ABS information—ABS user-pays services can be tailored to your needs, time frame and budget. Publications may be purchased. Specialists are on hand to help you with analytical or methodological advice.

- PHONE* **1300 135 070**
- EMAIL* **client.services@abs.gov.au**
- FAX* 1300 135 211
- POST* Client Services, ABS, GPO Box 796, Sydney 1041

WHY NOT SUBSCRIBE?

ABS subscription services provide regular, convenient and prompt deliveries of ABS publications and products as they are released. Email delivery of monthly and quarterly publications is available.

- PHONE* 1300 366 323
- EMAIL* subscriptions@abs.gov.au
- FAX* 03 9615 7848
- POST* Subscription Services, ABS, GPO Box 2796Y, Melbourne 3001



2130710004017
ISSN 1031-8534

RRP \$18.00